

HEXA-COVER®

SELECTED REFERENCES
WATER & INDUSTRY

Certified for use with
potable water according
(AS/NZS 4020:2018)

Australia

NW:	8.000 m ² Raw Water reservoir	Clarendon	1.600 m ² Irrigation water
		Laura	Water storage
NSW:		Morgan Park	3.100 m ² Water Tank
NSW	Sludge thickener (WTP)	Racecourse	5.300 m ² effluent pond
Sawpit	Wastewater / WWTP	Townsville	Water storage
Sydney	1.700 m ² water reservoir	Yeppon	11.000 m ² Water storage
Tanilba Bay	1.550 m ² WTP Catch Pond	Yeppon	2.950 m ² Water storage
QLD:		Tasmania:	
Biggenden	1.035 m ² STP	Hobart	Raw Water tank
Brisbane	1.100 m ² Water Reservoir		
Bromelton	Water tank		
Fraser Island	Water tank	WA:	2.000 m ² Water tank
Gayndah	Water tank		2.300 m ² water reservoir
Goomeri	Water tank		30.150 m ² water reservoirs
		VIC:	
		Bairnsdale	Water storage
		Bendigo	Water storage
		Bemm River	2.000 m ² Raw Water
		Gippsland	1.900 m ² Water storage
		Hayfield	6.000 m ² Water storage
		Laverton	Water tank
		Omeo	4.300 m ² Raw Water
		South W Vic	Water pond



"How's this for a dam great idea?"

Hundreds of these tiny hexagons are being installed on dams across the Great Southern as part of a new water saving trial.

The hexagonal discs - known as HexaCovers - are made from 100 percent recycled plastic and have been shown to reduce evaporation by 73 percent.

The covers were installed by majority Aboriginal-owned construction company, Benang and will reduce the need for water carting while also helping protect water quality.

Well done to Water Corporation for thinking outside the...square!"

Hon. Simone McGurk, Minister for Training and Workforce Development, Water - Industrial Relations

[Link - ABC News](#)



Better Water and More of It

Jaymie Dawes at Omeo WTP Raw Water Storage Reservoir

The Omeo WTP raw water storage reservoir draws water from Butchers Creek which has had issues with algae growth in the past. Algae would be carried from the river into the lined reservoir above the plant. The algae make the water more difficult to treat to potable water standards.

Unwanted nutrients from ducks and wildlife accessing the reservoir also compounded the algae problem. As a result, the reservoir required regular emptying and cleaning, to mitigate the effects of algae on water quality and treatment.

Aiming to reduce reservoir maintenance and the intensity of treatment required, a thorough assessment of available reservoir covers was performed. Critical factors included capital cost, maintenance cost, and effectiveness in reducing UV penetration (thereby limiting growth of algae).

In this case significant evaporation reduction was seen as an added benefit rather than a critical factor.

Hexa-Cover® were determined as the preferred technology and were used to cover the raw water reservoir at Omeo WTP. Installation was achieved by pouring shipping containers of the tiles into the reservoir.

East Gippsland Water's Coordinator Environmental Services, Jaymie Dawes says the results of installing Hexa-Covers at Omeo have been positive.

"We installed 108,000 Hexa-Cover® discs in June 2017, and since have seen a notable reduction in algae growth and E.coli in our raw water storage, which makes the water much easier to treat. We are now well into the third summer since installation and the reservoir has not needed to be emptied or cleaned."

The hexagonal tiles float freely on the water surface and arrange themselves in a grid that self-compensates for different reservoir shapes and varying water levels. The small size of the tile is an effective deterrent to waterfowl.

Up to 99% coverage of the surface area can be achieved, resulting in reduced evaporation, reduced contamination (from multiple sources) and improved water quality.

Even in situations where there are exposed surface areas as the tiles blow in the wind, water quality improvements appear unaffected.





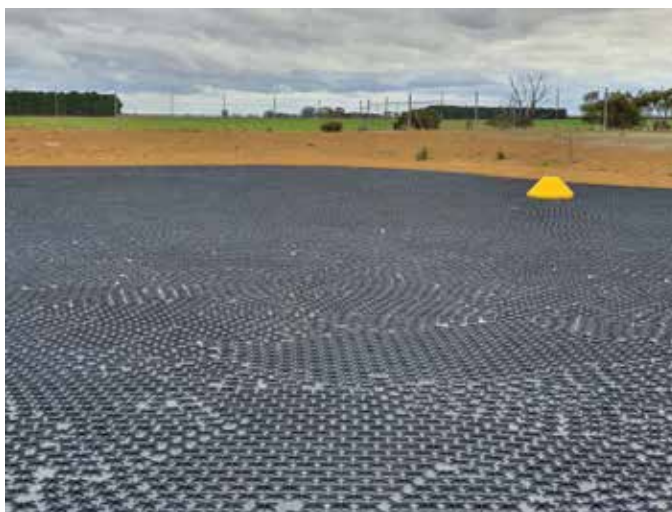
BETTER WATER AND MORE OF IT!

Hexa-Cover® at Omeo WTP (Raw Water Storage Reservoir) – The Results Are In!

In June 2017 East Gippsland Water installed Hexa-Cover® modular covers on the raw water reservoir at Omeo water treatment plant, with the aim of controlling algae which was sometimes carried in from the water source.

This was achieved with great success, making the water easier to treat and eliminating the regular emptying and cleaning of the reservoir which was previously required. More details of the installation can be found in the February 2020 edition of Operator.

To quantify the effect of the Hexa-Cover®, thorough testing of water from the reservoir continued and was compared with results from the 2 years prior to installation.



The effects are described and quantified by East Gippsland Water as follows:

Measured Parameter Effect:

Total Biovolume	95% Reduction
Potentially Toxic Biovolume	98% Reduction
E.coli	89% Reduction
Coliforms	Dramatic Reduction
Turbidity	57% Reduction
pH	Less variation
Water Temperature	Negligible Effect

The hexagonal tiles float freely on the water surface and arrange themselves in a grid that self-compensates for different reservoir shapes and varying water levels.

The small size of the tile is an effective deterrent to waterfowl (leading to reduction of E.coli). Up to 99% coverage of the surface area can be achieved, resulting in reduced evaporation, reduced contamination (from multiple sources), improved water quality and reduced operational & maintenance costs.

Water scarcity - a growing problem!

Hexa-Cover® help Australia reduce evaporation by 73%.

Additionally, Hexa-Cover® eliminates algae growth and prevents unwanted birds and ducks from landing on the covered water.

All to the benefit of the environment and human beings.

[Link, article](#)

Government of Western Australia



"Made from 100% recycled plastic, the covers were shown to reduce evaporation by 73%, saving more than 1.6 million liters of drinking water, during a recent trial involving researchers from the University of Western Australia in Wellstead, 90km east of Albany."

More Water Better Water


[Link, video](#)

ABC News, Australia



Another dam well underway:



Austria		Bulgaria		Chile	
A-8775	2.600 m² Spring pond	RO-210206	Leachate	Antofagasta	26.000 m² water storage
Belgium		Canada		Antofagasta	7.000 m² irrigation water
B-2860	Water tank, irrigation	BC	Wastewater tank	Antofagasta	5.000 m² water reservoir
B-2860	1.170 m² Rainwater tank	Bonnyville, AB	Industrial wastewater (O&G)	Antofagasta	Industrial wastewater
B-3300	5.000 m² Industrial wastewater	Cremona, AB	Wastewater tank	BioBio	2.500 m² Wastewater facility
B-3300	5.700 m² Industrial wastewater	Markham, ON	Wastewater tank	ConCon	2.700 m² Wastewater facility
B-3511	Water tank	Macoah, BC	1.000 m² Wastewater, WWTP	Iquique	39.000 m² Water storage ponds
B-8531	Water tank, irrigation	Millbrook, ON	Wastewater tank	Lomas Bayas	21.400 m² tailings ponds
B-8600	Industrial wastewater	Saskatoon	4.000 m² Wastewater pond	San Antonio	Industrial wastewater
B-8630	1.000 m² Water tank	Toronto, ON	4.000 m² Effluent lagoon	Santiago	Industrial wastewater, refinery
B-8700	Industrial wastewater	Truro, NS	Process water, dairy	Santiago	8.400 m² Industrial wastewater
B-8755	Industrial wastewater			Tarapacá	5.000 m² ILS, PLS
B-8800	Water storage tank	City of Nakusp, BC	4.000 m² WWTP reservoir	Tarapacá	2.400 m² Water storage facility
B-8820	Water storage tank		<p><i>"Familiar with the Hexa-Cover®, I felt the product could nicely cover the lagoon, controlling the algae growth as the sunlight would not be able to penetrate into the water. Additionally, the Hexa-Cover® would enable the aeration process and fluctuating water levels to continue"</i></p>	Valparaiso	Industrial wastewater
B-8830	Water tank, irrigation				
B-9070	Water storage tank				
B-9200	2.600 m² Buffer basin				
B-9831	Rainwater tank				
B-9850	Water storage tank				
Botswana					
Orapa	1.600 m² Raw water				
Brazil					
Holambra, SP	3.500 m² Water reservoir, irrigation				
Rio G du Sul	Wastewater, petrochemical				
São Paulo	Industrial wastewater				
São Paulo	1.000 m² Industrial wastewater				



China

Beijing	1.000 m ² Conta. wastewater, petro
Beijing	7.500 m ² Industrial wastewater
Beijing	Industrial wastewater, brewery
Guangxi	Wastewater, chemicals
Hebei	Industrial wastewater
Shandong	Industrial wastewater
Shanghai	Industrial wastewater, dairy
Tianjin	Industrial wastewater
Tianjin	1.000 m ² Wastewater, chlor-alkali
Tianjin	3.300 m ² Wastewater, petro

Colombia

Bogotá	1.000 m ² Water tank
--------	---------------------------------

Croatia

HR-31000	Industrial wastewater
HR-31540	Industrial wastewater

Czech Republic

CZ-471 29	Industrial wastewater, Food & Bev
CZ-687 62	Industrial wastewater (dairy)

Denmark

Holbæk Spildevand A/S

"We have Thermophilic digested biological sludge, digested at 55 degrees. This is done in the digester, from which the sludge is fed to a open storage tank. Subsequently the sludge is dewatered, and the water from the dewatering is led to an "Anita Mox" process. This process should preferably stay above 18° degrees, so it is important that the temperature does not drop too low in the storage tank. To avoid this, we have installed Hexa-Cover® and by doing this we have reduced the heat loss in the storage tank. The temperature of the Anita Mox® process is raised from 17.2° C to 19.7° C (measured from January to February 2013), despite temperatures down to -15° C"

Henrik Thygesen, Coordinator – Operations

Nordic Sugar A/S: 1.300 m² wastewater reservoir

"We chose Hexa-Cover® for covering our pool for several reasons.

First of all the Hexa-Cover® ensure an effective reduction of odors but also because the solution is simple and straightforward. The Hexa-Cover® is poured in, and automatically they create a coherent cover and automatically adapt to changes in the water level. The lifetime of 25 years was another factor.

We are very pleased with the choice of Hexa-Cover®"

Ture Kliving, Environment Responsible



Effective coverage for all fluids

Sashimi Royal, DK-7730

"Since 2017 we have used Hexa-Cover® in our sea water tank in order to control growth of algae.

Our conclusion is very clear; Hexa-Cover® is a very effective tool to avoid growth of algae as the sun is blocked from affecting the water. Further, the Hexa-Cover® is very easy installed, it requires no maintenance, no service and no repair.

Prior to choosing Hexa-Cover® we also considered a tank-top but as we are located right at the seafront, we realized that we needed a long lived solution in no risk of being damaged by wind. We are very pleased about Hexa-Cover®."



Rockwool International A/S, DK-9500

2 x 1.250 m² water storage tanks

"We are now experiencing a significant difference. There is no clogging of filters because of algae and this means no stoppages at the plant, which again means huge savings in our operational costs.

Furthermore, the Hexa-Cover® solution is - compared to i.e. tents and tarpaulins as several industries are using to cover large containers - a much cheaper and easier solution.

In fact the Hexa-Cover® comes at around half the price of a traditional tent or tarpaulin and they are very easy to install and operate.

You simply add the Hexa-Cover® into the container, and they distribute themselves automatically making a cover that needs no inspection and/or servicing.

So, all in all, we are very satisfied with the Hexa-Cover® solution

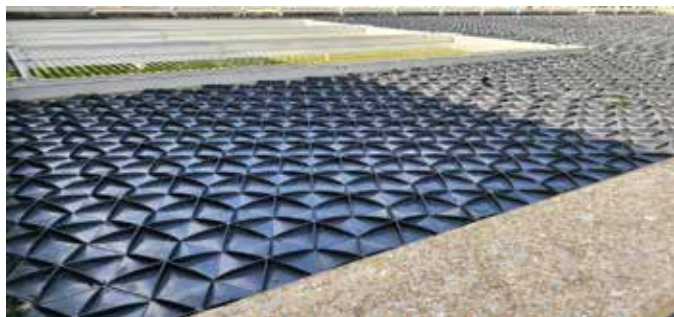
Christian Jensen, Process Manager



Ecuador - New Quito Int. Airport
Water tank, fire fighting and bird deterrent

Estonia
EST-44106, Kunda Process water

Finland
FIN-99250 CCD - counter current



France
F-01150 Chemicals
F-01160 Water tank
F-01360 Chemicals
F-03390 Leachate
F-03600 Retention tank
F-04330 Water tank
F-06500 Water tank
F-10160 Industrial wastewater
F-10160 Irrigation water
F-13117 Chlorinated solvents

F-13117 Industrial wastewater
F-13117 1.000 m² Industrial wastewater
F-13130 Chemicals
F-13130 Polluted water
F-13131 Chemicals
F-13131 Industrial wastewater
F-13270 1.000 m² process water
F-13773 1.400 m² Industrial wastewater
F-16190 Water tank (irrigation)
F-17140 Water tank
F-17520 Water tank
F-17800 Water tank
F-22450 6.000 m² Water reservoir, irrigation
F-26000 Water storage tank
F-26310 Water tank
F-26310 Water tank (irrigation)
F-26410 Water tank (irrigation)
F-26560 Water storage facility
F-28310 Water tank (greenhouse / irrigation)
F-29100 Water tank, irrigation
F-29250 Water tank (greenhouse / irrigation)
F-29279 Industrial wastewater
F-29600 Water tank, irrigation
F-30390 1.000 m² Industrial wastewater
F-31200 Water storage
F-34310 Water tank (horticulture / irrigation)
F-35031 Water tank (irrigation)
F-35500 Water storage, irrigation
F-36100 1.850 m² Water storage
F-36400 Wastewater
F-36600 1.300 m² Digestate basin

F-37510 Water tank, irrigation
F-38150 Chlorine
F-38150 Industrial wastewater
F-38360 Nitric acid
F-38550 Water tank
F-38670 VOC reducing
F-40800 Industrial wastewater
F-41700 Water tank
F-41700 Industrial wastewater
F-41700 Water basin
F-42163 Industrial wastewater
F-44115 Water tank, irrigation
F-44190 Water tank
F-44480 Chemicals
F-44480 Industrial process, Oil & Gas
F-44660 Water tank
F-45100 1.200 m² Water storage
F-45250 Water reservoir
F-48400 Water storage
F-50500 Water tank
F-53270 Industrial wastewater
F-53602 Chemical tank
F-53620 Industrial wastewater
F-56140 Industrial wastewater
F-56320 Water tank (irrigation)
F-56607 Chloric acid
F-57500 2 x Retention tanks
F-59152 Water tank
F-59279 1.300 m² Emergency tanks
F-59279 Industrial wastewater
F-59990 1.500 m² Industrial wastewater

F-60190	Retention tank
F-60190	Industrial wastewater
F-60191	Retention tank
F-60350	2.100 m ² Industrial wastewater
F-60350	Industrial wastewater
F-60550	Industrial wastewater
F-64170	1.600 m ² leachate
F-68390	Industrial wastewater
F-69190	Industrial wastewater
F-69192	Industrial wastewater
F-74156	Retention tank
F-75000	Rainwater retention basin
F-76200	Industrial wastewater
F-81100	Process water
F-82700	1.800 m ² Industrial wastewater
F-85170	Industrial wastewater
F-93155	Diesel tank / Hexa-Cover® Oil & Gas
F-93155	Storm water
F-93155	Industrial wastewater, petrochem
F-93155	Water tank
F-95310	Water tank

"Sur le site de SAUSHEIM methanisation nous avons besoin de couvrir une bâche de stockage de centrats charges en phosphore afin de limiter la croissance d'algues.

Cette bâche stockage ayant un niveau fluctuant il fallait egalement que la couverture soit mobile.

Nous avons decide d'installer une couverture flottante Hexa-Cover®.

Cette technologie nous assure une installation tres facile. La couverture est composee de petits elements ivres en Big Bag qu'il suffit de verser dans l'ouvrage, ils flottent en surface, ils sont autoplant et ne necessitent pas d'entretien.

La couverture flottante ne craint pas les déchirures, elle est garantie 10 ans, avec une duree de vie prevue de 25 ans.

Nous sommes satisfaits de la couverture Hexa-Cover®"

G. GAILLARD



Germany

D-03100	Leachate tank
D-03249	Water tank, firefighting
D-04509	Water tank
D-06237	2.300 m ² emergency water tank
D-06237	Industrial wastewater
D-06803	Cooling water
D-17087	Wastewater
D-17091	Polluted surface water
D-17389	2 x 2.500 m ² Wastewater
D-18519	Polluted surface water
D-19288	Process water
D-19348	1.400 m ² Industrial wastewater
D-22113	Leachate
D-23936	Wastewater, WWTP
D-24539	Water storage tank
D-25524	Industrial wastewater
D-25572	Leachate
D-31275	Process water
D-32805	Municipal wastewater
D-35764	Municipal WWTP
D-38106	Wastewater
D-38106	Wastewater tank, WWTP
D-38268	Water tank, irrigation
D-38373	Municipal leachate
D-39418	Process water
D-47829	Chemical tank
D-50129	Sewage treatment plant
D-61100	2.400 m ² Geothermic industry tanks
D-66115	Process water



D-67227	2.200 m ² industrial wastewater
D-69469	Sewage treatment plant
D-71334	Water tank
D-73497	Process water
D-84489	1.200 m ² process water
D-87787	Industrial wastewater, brewery
D-97421	Municipal WWTP
D-98634	Industrial wastewater

SKZ-TeConA GmbH, D-97076:
"At SKZ we installed the Hexa-Cover® in a 95° C test facility."

"The development of moist, and the evaporation is reduced significantly"



BAUR Folien GmbH, D-87787



Hamburg Port Authority, D-21159



"We are very satisfied with the Hexa-Cover®. The Hexa-Cover® serve their purpose to reduce the amount of light in the water and thus plant growth in the pond, very well"

"Before installing the Hexa-Cover® our customer - a brewery - had many complaints from neighbors about the odor. After the installation the problem is solved"

[Video - installation](#)



Greece

GR-8648	Wastewater seawater / oil mix
GR-1930	Industrial wastewater
GR-1930	1.400 m ² Oil & Gas applications

Hungary

HU-1000 area	44.000 m ² Water storage
HU-1000 area	48.000 m ² Water storage
HU-2338	Water storage facility
HU-2344	5.000 m ² Industrial wastewater
HU-4300	6.000 m ² Water reservoir

Iceland

Reykjavik	Industrial wastewater
-----------	-----------------------

India

Gujarat	Industrial wastewater
---------	-----------------------

Ireland

O'Neills Sportswear, Dublin

"We are very happy with the performance of the Hexa-Cover®, the odor problem has disappeared"

Listowel, Co. Kerry	Industrial wastewater
Mellow, County Cork	Wastewater
Meath	1.150 m ² Industrial waste water, brewery



Israel

3.500 m ²	Water reservoir, irrigation
20.000 m ²	Water reservoir, irrigation



Italy

I-00131	Process water
I-04010	Landfill
I-04100	Landfill
I-24060	Industrial wastewater
I-35040	Water tank, irrigation
I-40054	Water tank, irrigation
I-40128	1.100 m ² Industrial wastewater
I-44045	Water tank, irrigation
I-45011	Water storage
I-51012	Industrial wastewater
I-63900	Water tank, irrigation
I-67063	Industrial wastewater (Coca-Cola®)
I-70038	Water tank
I-84091	Water tank (irrigation)
I-95042	Water tank (irrigation)
I-95121	Industrial wastewater, refinery

Japan

Hakata area	Industrial wastewater
Tokyo area	Industrial wastewater
Tokyo area	Leachate



Jordan

Amman	7.900 m ² Water storage facility
Ramtha	8.800 m ² wastewater (WWTP)

Kazakhstan

Aktogay	4.000 m ² PLS reservoir
Almaty	1.650 m ² PLS reservoir

Korea

Seoul	Wastewater
-------	------------

KSA

Water storage facility
Industrial wastewater
1.100 m ² Wastewater ponds (60-90°)
4.800 m ² Wastewater storage facility
4.350 m ² Water storage

Malta

Nexxar	Water tank, irrigation
--------	------------------------

Mexico

Central	104.000 m ² Tailing Pond
Veracruz area	2.000 m ² Water pond
Veracruz area	Water tank



Morocco

Casablanca	9.000 m ² Leachate reservoirs
------------	--

Netherlands

NL-1786	1.200 m ² water reservoir
NL-3197	Industrial wastewater
NL-4286	Water tank
NL-4451	Water tank
NL-6163	Industrial wastewater
NL-6167	10.600 m ² Industrial wastewater
NL-6170	16.000 m ² Industrial wastewater
NL-6170	9.000 m ² Industrial wastewater
NL-6171	6.850 m ² Industrial wastewater
NL-9936	1.000 m ² Industrial wastewater

"We are satisfied with the use of the Hexa-Cover® to cover up one of our proceswater bassins. The odor in the area has reduced drastically"





New Zealand

North Island	7.000 m ² Wastewater lagoon
South Island	1.040 m ² Sewage treatment pond
South Island	1.900 m ² Wastewater pond
South Island	3.460 m ² Wastewater
South Island	19.500 m ² Wastewater facility



Norway

N-4029	Chemicals
N-5954	Wastewater / crude oil



Oman

4.160 m ² Process water

Portugal

PT-2380	Industrial wastewater
PT-3800	Industrial wastewater
PT-3860	Water tank, firefighting
PT-4415	Industrial wastewater
PT-7220	Water tank, irrigation

Poland

PL-22 100	1.050 m ² Wastewater WWTP
-----------	--------------------------------------

Qatar

4.200 m ² industrial wastewater
--

Romania

RO-01	Wastewater
RO-07	Industrial wastewater
RO-50	Wastewater, homogenization tank
RO-50	7.700 m ² Industrial wastewater
RO-54	Landfill / wastewater
RO-55	Water tank
RO-70	SBR Tank
RO-82	Wastewater

Saudi Arabia

Dammam	6.000 m ² Ind. wastewater (refinery)
--------	---

Singapore

Chemicals

Slovak Republic

82412	Process water
99128	Industrial wastewater

South Africa

Durban area	4.500 m ² Industrial wastewater
-------------	--

Spain

Tecnoaliment, S.L., Pobla de Segur, Lleida

"We have a water storage facility of about 10.000 m³ located in La Pobla de Segur (Lleida). For obvious reasons, water evaporation is very important in this area because of the height above sea level. Therefore, we were looking for a solution to reduce this loss. As the water level in the reservoir varies a lot, the solution chosen would have to allow also to adapt to this.

Based on the above, we chose to cover the reservoir with the Hexa-Cover® as this solution offers all the required features we requested.

After the installation we have seen a significant reduction in evaporation of around 75-80% which represents an extra saving of water for us.

In addition, we have noticed a significant improvement in water quality as Hexa-Cover® also is very effective in stopping the growth of algae - there is simply no penetration of light into the water which means no growth of algae, what entails a significant increase in water quality. This improvement in water quality means a significant saving in chemicals to treat water and also an improvement in the supply without seals in the filters.

For all this, we can say that we have found the ideal solution. Indeed, the Hexa-Cover® is very effective, very easy to handle and does not require any additional service, maintenance or supervision.

Hexa-Cover® is highly recommended and represents a good long-term investment"

Joan Ramon Porta, Director



Atlas Gestión Medio Ambiental, S.A. (Barcelona, Spain) chose Hexa-Cover® to reduce the odor level in two leachate ponds from a hazardous waste controlled landfill

"To reduce odors, we chose the Hexa-Cover® for our 2 leachate ponds."

The main reasons for choosing Hexa-Cover® were its ability to reduce odors and that it is a solution that does not require permanent structures, and therefore minimizes the installation and maintenance costs associated with this type of roof.

Even the installation is very simple and simple, Hexa-Cover® is launched directly into the ponds and each of the elements are distributed and placed automatically creating a uniform cover.

Another important aspect is the automatic adaptation to any change in the liquid level.

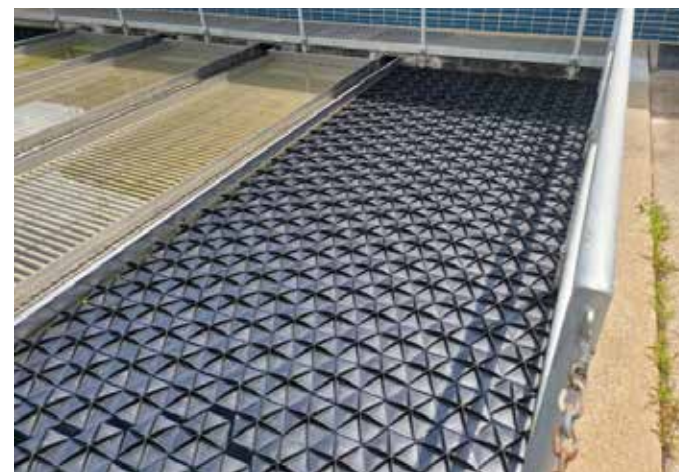
We are very pleased with the choice of Hexa-Cover®"

Xavier Mundet , Director General



Spain

E-03291	1.000 m ² leachate pond	E-35000	2.600 m ² Water basin, irrigation
E-04700	1.600 m ² Water tank	E-35001	2.500 m ² water tanks
E-04710	Water storage (irrigation)	E-35001	6.700 m ² water reservoirs
E-06220	Cooling water	E-35450	Water tank, irrigation
E-06170	Water tank	E-35500	7.100 m ² Water basins, irrigation
E-06870	Water tank	E-36006	1.720 m ² Effluent lagoon
E-08184	Water tank	E-37420	2.000 m ² Leachate pond
E-08272	Hazardous wastewater	E-38000	Water tank, irrigation
E-08420	Water tank, irrigation	E-38001	1.200 m ² water tanks
E-08450	Water tank, irrigation	E-38001	1.300 m ² water tanks (irrigation)
E-08781	5.800 m ² Leachate	E-38080	1.320 m ² Water tanks (irrigation)
E-12429	Water tank, irrigation	E-42005	Water tank, irrigation
E-14546	Water tank	E-42005	Wastewater
E-23440	Water tank, irrigation	E-43110	Styrene tank
E-25123	Water reservoir	E-43439	Water tank
E-25242	Water tank	E-43460	Water tank
E-25316	2 x Water tanks	E-43460	Industrial wastewater
E-25616	Water tank	E-44580	Water tank
E-25690	2.900 m ² Water tanks (irrigation)	E-46200	Water storage (irrigation)
E-25753	Water tank	E-47001	4.400 m ² landfill
E-28300	WWTP (pharmaceutical industry)	E-48001	1.700 m ² leachate basin
E-28320	16.000 m ² Landfill	E-48002	Leachate
E-28830	Water tank, irrigation	E-49708	Water tank
E-30001	1.500 m ² water pond (irrigation)	E-50290	Water storage tank
E-33401	Wastewater, WWTP	E-61100	Water basin, solar plant
E-35000	1.000 m ² Water tank, irrigation	E-68100	Water basin, solar plant
E-35000	1.300 m ² Water tank, irrigation		



Switzerland

CH-1860	Water storage
CH-4702	Retention tank
CH-6034	Water tanks, irrigation
CH-6147	Wastewater
CH-6287	Water storage
CH-8353	Water storage
CH-8552	Water storage, irrigation

Taiwan

Taipei	Municipal WWTP
--------	----------------

Thailand

Bangkok	Water tank
---------	------------

Turkey

54000	6.100 m ² Industrial wastewater, sugar manufacturing
-------	---

UK

DA11	Industrial water storage
DA11	1.200 m ² water storage reservoir
EH27	Industrial wastewater
NG 33	Industrial wastewater



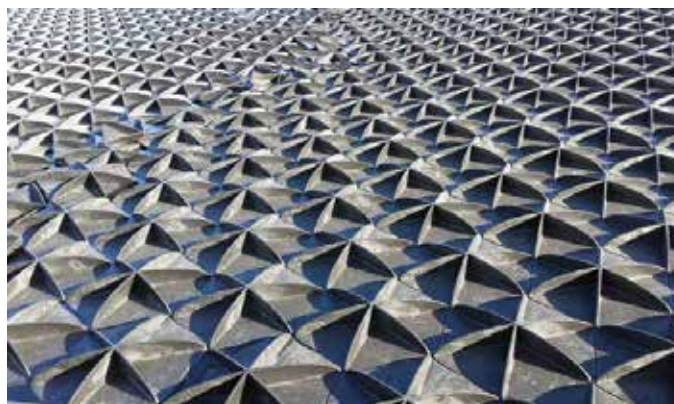
USA

Alexandria, LA 74,000 ft² / 6,875 m²
Wastewater reservoirs

Algona, IA Industrial wastewater
Bedford, IN Industrial wastewater
Potter Valley, CA Water storage facility
Canton, OH Industrial wastewater
City of Patterson Municipal WWTP
Clarksburg, WV 4,730 m² frac water tank
Cleveland, OH Industrial wastewater
Clinton, TN Wastewater, WWTP
CO 5 x frac water tanks
Dakota, IL Industrial wastewater
Dallas, OR Water storage tank
Dallas, WV 2,315 m² frac water tank
DeBuque, CO 10,500 m² water storage
Dickson County, TN Sedimentation tank
Emporia, KS Industrial wastewater
East Palestine, OH 20,100 ft² water tank
Francesville, IN Industrial wastewater
Gallatin, TN Municipal wastewater
Henderson, KY Industrial wastewater
Houston, TX Industrial wastewater

Green Bay, WI:
2,185 m² Deicing Storage Pond
Austin Straubel International Airport)

Green River, WY Industrial wastewater
Jackson, OH Industrial wastewater
Kanab, UT Water tanks, wildlife
Laurel, MD Industrial wastewater
Lewis Run, PA Water storage facility



La Porte, TX Contaminated water
Marsing, ID 20,000 ft² Water storage
Mesa Verde, CO Water storage facility
Medaryville, IN Industrial wastewater
Milkford, OH 1,950 m² wastewater
Monaca, PA Industrial wastewater
Monroe, WI 1,235 m² equalization tank
Moorhead, MN Water storage facility
Pacheco, CA 1,800 m² water reservoir
Port Arthur, Texas Water Storage tank
Piketon, OH Water storage facility
Port Arthur, TX Water storage facility
Princeton, NJ Water storage tank
Springfield, PA Water storage facility
Sonora, CA Wastewater
St. Croix, USVI 32,300 ft² Water storage



Napa Berryessa Resort Improvement, Napa, CA

Napa Berryessa Resort Improvement, chose Hexa-Cover® for a wastewater application for controlling odor, algae and evaporation

Hexa-Cover® is installed at Lake Berryessa Wastewater Treatment plant, 1465 Steele Canyon Road, Napa. The application is to cover two concrete equalization basins.

Process:

Raw sewage from homes and resort, flow from gravity and lift stations into headwork's Lakeside Spiral Screen, screened water into two equalization basins with Hexa-Cover®, then to Ovivo MBR, to effluent basin or alternate overflow basin, then pumped to reservoir off site for land application.

Plant flow capacity approximately 30.000 GPD now and at build out 60.000 GPD.

"The visit to the plant was a bit amazing. There was no odor from the "Hexa-Covered" EQ Basins. These EQ basins have very high odor potential and algae potential because of the heavy nutrients coming off the screen. There was no algae, the discs as advertised interlocked, they floated up and down with no problem, and could not help but reduce evaporation."



A solid cover presented safety issues, the discs did not. Summit Engineers was going to put aeration in these basins but saw a sample of the Hexa-Cover® product, called references then recommended the Hexa-Cover® installation. It penciled out better than aeration. That was important to this design build project, which Western Water Constructors, Inc. did with Summit.

Adjacent to these equalization basins are the effluent basin and overflow basin. These two basins were covered with algae.

The point; the Hexa-Cover® eliminates algae!

As proof, side by side basins, same plant, same time, two "Hexa-Covered" basins without algae and two uncovered basins with heavy algae. Also, no odor from the EQ basins.

The discs arrived in large sacks. Installation was simple; they simply dumped the discs into the basins. Installation was less than an hour. Contrast that to an aeration system"

Austin Straubel International Airport

Green Bay, WI

2.185 m² Deicing Storage Pond

The Austin Straubel International Airport required a new cover for its open water storage pond, which is used for deicing and storm water retention.

Critical to the operation of the airport, the open water pond requires a cover to serve as a bird deterrent and to protect wildlife from the toxicity of glycol.

In addition, the glycol and other chemicals used in the airport maintenance generate strong odors which also need to be controlled.

The unique Hexa-Cover® offers unique features for odor control, algae control, evaporation control and heat retention. The patented design incorporates hexagonal discs constructed of 100% recycled polypropylene with interlocking edges and a buttressed profile that allows for self-leveling, adjustment and dispersion ensuring maximum surface area coverage in all conditions.



The cover was installed with minimal time, cost and equipment, providing almost instant coverage.

Installed in less than 4 hours, bags of discs were emptied into the basin and the cover immediately began serving as a bird deterrent, eliminating odors and keeping wildlife from coming in contact with potentially harmful deicing fluids.

When the pond level fluctuates, the tiles lay on the pond slopes and bottom until the water level rises again.

What could have been a major problem is now a worryfree operation thanks to the Hexa-Cover® System.



For more information

Hexa-Cover A/S • Vilhelmsborgvej 5 • DK-7700 Thisted, Denmark • TEL +45 96 17 78 00
www.hexa-cover.com • info@hexa-cover.dk